



# Northwestern Health Unit Census 2006 - Report 1

January 2008

## Summary:

- Long history for Canadian census.
- Census 2006 most recent census.
- Population in Kenora District increased by 4.2%.
- Population in Rainy River decreased by 2.5%.
- Ontario population increased by 6.6%.
- Pickle Lake, Red Lake, Sioux Narrows/Nestor Falls, and Dawson experienced positive population growth in 2006.
- Rainy River District had the highest total dependency ratio of 55.8%.

## Inside this issue:

History of the Census	1
What is in the Census?	2
The 2006 Census in the Kenora and Rainy River Districts	2
Population Characteristics, 2006	4
Population by Age Group, 2006	4

Source of data in this Report is from: Statistics Canada, 2006 Community Profiles. 2006 Census Catalogue no. 92-591-XWE. Released March 13, 2007.  
<http://www12.statcan.ca/english/census06/data/profiles/community/index.cfm?Lang=E>

## History of the Census

The taking of census or counting of people dates back to the 15<sup>th</sup> century. In 1666, a French man by the name of Jean Talon is credited for the development of the census in Canada. He started in what was then known as New France. He personally toured New France and counted people by their place of residence. Content of the census and the intervals between censuses varied over time. However, on August 30, 1851, it became law to conduct censuses every ten years, and by 1956 it was decided to conduct the census every five years to provide the government with a method of measuring economic growth and urbanization in the country.



Census questionnaires have changed over time. Consultations are undertaken to develop census questions that reflect the interests, societal changes or emerging issues of the time period.

The census is an essential source of information about Canada and its people. Census data is used to determine the number of seats in Parliament and to set the boundaries of the federal electoral districts.

There were two types of questionnaires. A short questionnaire containing eight questions was distributed to 80% of the households and a long questionnaire containing the same eight questions as the short questionnaire plus 53 other questions was given to 20% of the households. Weighting was used to project the information gathered from the 20% sample to the entire population. In addition,

respondents were asked for permission to have personal information made available to the public in 92 years for historical and genealogical research.

Individuals have access to the 2006 Census information free of charge through Statistics Canada's website ([www.statcan.ca](http://www.statcan.ca)). Eight official 2006 Census data releases are scheduled between March 13, 2007 and May 1, 2008. Data will be summarized and

More than 80 pieces of legislation have authority to collect census data.

## The 2006 Census

The 2006 Census was conducted between May 1 and May 13, 2006. The census enumerated the entire population of Canada including non-permanent residents and Canadians who were out of the country temporarily. Every Canadian household is required to complete census forms.

Seventy percent (70%) of the census forms were delivered by Canada Post with the other 30% being delivered by an enumerator. Completed forms were returned by mail or online via the Internet.



published in *The Daily*. By law, Statistics Canada protects the confidentiality of respondents, counts are rounded and where necessary data is suppressed.

## What is in the Census?

Between March 13 and December 4, 2007, Statistics Canada released four census data summaries that focused on population and dwelling counts; population by age and sex; marital status; families and households; housing and shelter costs; language; mobility and migration; and immigration and citizenship. The next four summaries from Statistics Canada will be released between January 15 and May 1, 2008, and include Aboriginal people; labour; place of work; education; language (at work); ethnic origin and visible minorities; income and earnings; and housing and shelter costs.

Census data has been released by geographic levels such as provincial, census divisions and census sub-divisions. Usually following the initial release of the census data, Statistics Canada provides data at the health region, such as in Ontario, by public health units. Rather than waiting another six to eight months for information at the public health unit level, the Northwestern Health Unit decided to prepare summaries of data at the census division (district) and census sub-division level (communities) now. Summary data at the health unit level will be prepared when it becomes available.

## The 2006 Census in Kenora and Rainy River Districts

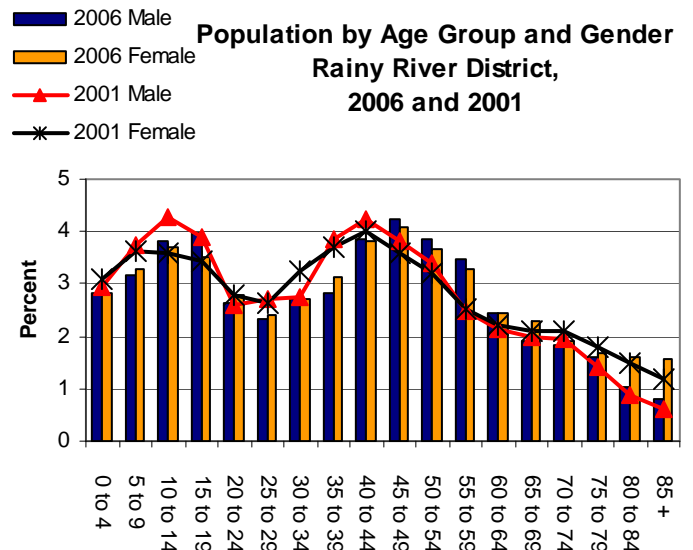
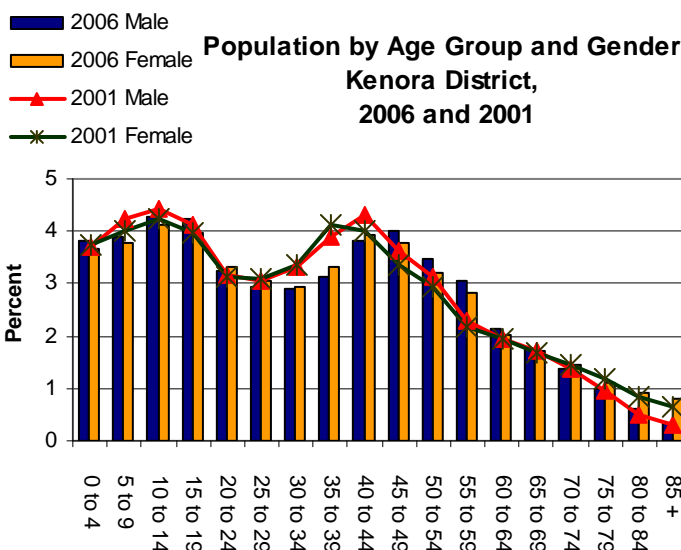
The 2006 Census Population for the Kenora and Rainy River districts and the 19 municipal communities in these districts represents the first of a series of NWHU focused reports based on the 2006 Census prepared for staff and other persons interested in the information.

Limitations of the census information include rounding of numbers, suppression of counts less than five, and issues with population counts for Aboriginal people. In addition, data in this report is used to compare changes overtime within the towns, townships, cities, and districts. Caution must be exercised not to compare one city to another city or one town to another town because the populations are small and the structure of the populations are different.

Between the 2001 and 2006 censuses, the population in the Kenora District increased by 4.2% or by 4,070 people. The percentage of children under 9 years declined while the percentage of adults increased in the 45 to 64 age groups between census years. The percentage of females in the 70+ age groups in 2006 was higher than that found for males.

The population in the Rainy River District decreased by 2.5% or by 745 people. The percentage of children under 9 years declined between census years. The percentage of females in the 65+ age groups in 2006 was higher than that found for males.

The population of Ontario experienced a 6.6% increase and had a population density that was 12-13 times higher than that found for the Kenora and Rainy River districts.



The communities of Pickle Lake, Red Lake, Sioux Narrows/Nestor Falls, and Dawson reported positive growth. The Kenora District reported a positive growth rate of 4.2%, and the Rainy River District reported a 2.5% decline in population.

The Rainy River District experienced a higher total dependency ratio (55.8%) than that found for the Kenora District (52.8%) and Ontario (46.5%).

The Kenora District and Rainy River District had median ages of 34.9 years and 41 years, respectively. The median age for Ontario was 39.0 years. The population of the township of Pickle Lake had the youngest median age of 30.2 years followed by the township of Sioux Lookout at 35.1 years. The population of the township of Sioux Narrows/Nestor Falls had the oldest median age of 49.6 years followed by the township of Lake of the Woods at 49.5 years.

**What is a population?**

**Population** refers to the number and percent of residents by age group and gender in a given year.

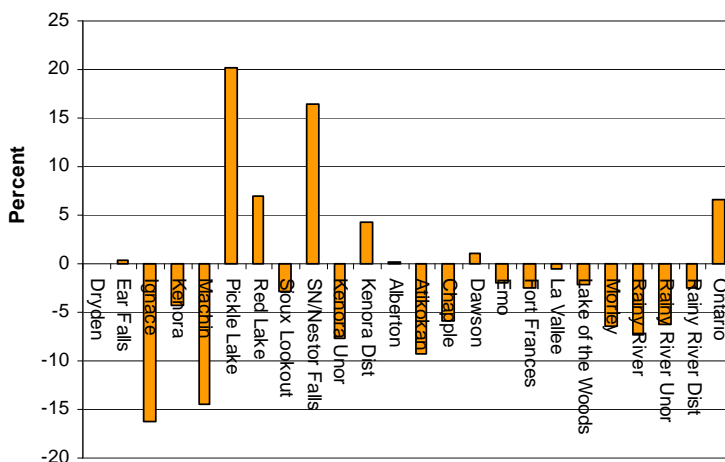
This information portrays the characteristics of the population in a given area. A number of statistics can be calculated from population counts such as dependency ratios, age standardized rates, and rates of health issues and services.

Census data may under count some groups such as the homeless. The pooling of on-reserve Aboriginal data makes interpretation of the data difficult. Some Aboriginal communities do not participate in the census.

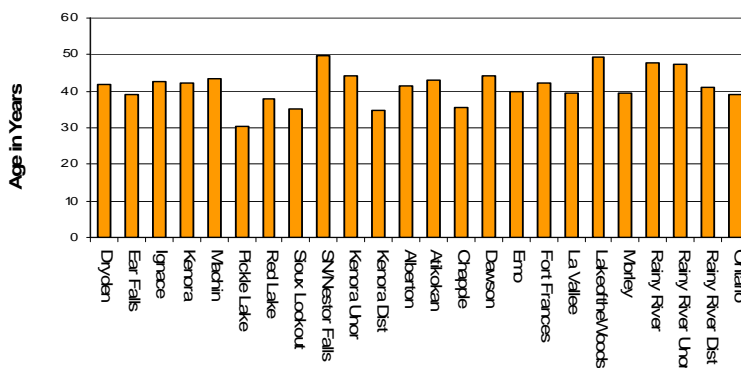
Changes in the wording of questions and the introduction of new questions over time does not permit direct comparisons from one census year to another. Some population counts have been adjusted to protect confidentiality. Some geographic boundaries have changed effecting population counts.

Population of Kenora and Rainy River Districts, 2006					
	Kenora District	Kenora Unorganized	Rainy River District	Rainy River Unorganized	Ontario
Population in 2006	64,419	7,041	21,564	1,431	12,160,282
Population in 2001	61,802	7,631	22,109	1,526	11,410,046
% Change	4.2	-7.7	-2.5	-6.2	6.6
Population density per (square km)	0.2	0	1.4	0.1	13.4
Land area (square km)	407,192.70	400,652.30	15,472.94	12,247.18	907,573.80

**Percent Change in Population, 2006**



**Median Age, 2006**



**What is population Growth?**

**Population growth** refers to the ratio of the difference between the population at the end of the period and the population at the beginning of the period.

**Calculation:** population at the end of the period minus the population at the beginning of the period divided by the population at the beginning of the period multiplied by 100. When the rate is negative, the population is declining, while a positive rate indicates a certain level of growth. A growth rate of zero does not mean there are no changes in the population between the two measurement points, only that the net difference between births, deaths and migration is zero.

**Median age** refers to the age that exactly one-half of the population is older than the median age and the other half is younger than the median age.

**Dependency ratio** refers to the percent of the population 0-14 years and 65 years and older - the dependent population on the 15-64 year olds (the working a population).

## Population Characteristics, 2006

	Population 2006	Population 2001	% Change	Median Age	% of the population aged 15 to 64	% of the population 65 years and over
Dryden	8195	8198	0.0	41.8	66.2	16.0
Ear Falls	1153	1150	0.3	39.1	68.5	12.1
Ignace	1431	1709	-16.3	42.5	69.9	12.2
Kenora	15177	15838	-4.2	42.4	66.8	16.2
Machin	978	1143	-14.4	43.3	66.5	16.4
Pickle Lake	479	399	20.1	30.2	69.9	5.2
Red Lake	4526	4233	6.9	37.9	71.7	9.4
Sioux Lookout	5183	5336	-2.9	35.1	70.3	8.6
Sioux Narrows/Nestor Falls	672	577	16.5	49.6	69.2	18.6
Kenora Unorganized	7041	7631	-7.7	44.3	70.0	13.8
Kenora District	64419	61802	4.2	34.9	65.4	11.0
Alberton	958	956	0.2	41.6	72.6	7.9
Atikokan	3293	3632	-9.3	43.0	65.3	17.6
Chapple	856	910	-5.9	35.7	65.4	12.9
Dawson	620	613	1.1	44.2	58.9	18.5
Emo	1305	1331	-2.0	39.9	61.3	17.2
Fort Frances	8103	8315	-2.5	42.3	63.1	18.9
La Vallee	1067	1073	-0.6	39.4	69.8	8.9
Lake of the Woods	323	330	-2.1	49.5	66.6	21.7
Morley	492	526	-6.5	39.6	67.0	13.4
Rainy River	909	981	-7.3	47.8	55.6	27.5
Rainy River Unorganized	1431	1526	-6.2	47.3	67.4	17.5
Rainy River District	21564	22109	-2.5	41.0	64.2	16.1

## Population by Age Group, 2006

	0-4	5-9	10-14	15-19	20-24	25-29	30-34	35-39	40-44	45-49	50-54	55-59	60-64	65-69	70-74	75-79	80-84	85+
Dryden	380	505	565	615	465	355	440	565	660	735	615	575	400	380	310	245	200	180
Ear Falls	75	75	70	75	70	70	85	70	95	90	100	80	55	50	40	30	10	10
Ignace	65	110	85	85	65	80	95	80	115	130	145	115	90	70	45	30	25	5
Kenora	690	780	1110	1190	860	740	760	905	1285	1395	1230	1050	720	645	580	495	405	340
Machin	35	65	75	55	40	40	60	55	85	95	80	80	60	45	45	30	25	15
Pickle Lake	30	35	50	40	45	35	35	35	35	35	25	40	10	15	5	0	5	0
Red Lake	240	285	335	320	315	340	265	310	395	450	355	295	200	130	100	75	70	50
Sioux Lookout	350	365	380	390	340	375	390	375	470	460	390	275	180	120	105	90	85	45
Sioux Narrows/Nestor Falls	20	30	25	25	40	25	45	25	50	55	60	75	65	50	35	30	10	0
Kenora Unorganized	290	390	455	475	350	275	305	445	625	685	660	635	475	375	300	185	85	30
Kenora District	4820	4935	5410	5285	4230	3855	3765	4170	5000	5030	4310	3790	2695	2235	1810	1350	990	730
Alberton	35	55	95	80	55	35	50	50	90	95	105	75	55	30	15	10	15	5
Atikokan	170	185	205	220	175	140	165	225	280	300	265	220	160	140	140	140	100	60
Chapple	65	55	65	75	55	50	55	40	55	60	55	70	45	30	40	15	20	5
Dawson	40	40	65	45	25	10	20	35	40	50	50	50	40	30	40	20	15	10
Emo	85	95	100	100	65	60	80	75	110	100	80	80	50	50	50	40	35	50
Fort Frances	430	485	545	550	465	400	440	485	580	690	590	535	380	350	310	320	290	260
La Vallee	50	65	105	105	55	40	60	65	110	115	80	65	50	35	25	15	10	10
Lake of the Woods	10	15	20	25	10	15	10	10	25	25	35	30	30	25	25	10	5	5
Morley	25	35	35	45	30	20	30	20	40	35	45	40	20	20	15	15	5	10
Rainy River	30	60	60	60	45	40	30	50	50	65	75	45	45	50	45	45	50	60
Rainy River Unorganized	55	80	90	100	45	50	55	70	115	130	155	140	105	85	80	45	25	15
Rainy River District	1220	1400	1625	1615	1165	1015	1175	1285	1650	1795	1625	1455	1060	895	810	705	565	505